

Latin Bases Which Can Occur in Closed Syllables

(2.4)

Base

Related Base(s)

Meaning

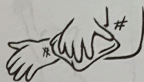
Example Word

Example Image

(2.4)

press,
push against

compress



(2.4)

break

disrupt



(2.4)

sens(e)

feel, perceive

absent



(2.4)

sta, stat(e),
stit

place, stand

insist



(2.4)

standing

constant



(2.4)

salt

leap, assault

insult

